



Using Clinical Data to Raise Awareness Around High Risks

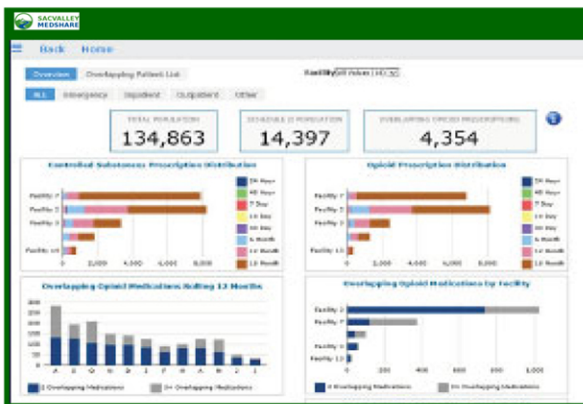
Clinical analytics help members of the health care team proactively identify and treat at-risk populations, engage patients sooner, reduce costs and understand the performance of applied health interventions on health outcomes.

The Opioid/Controlled Substances dashboard supplements the Prescription Drug Monitoring Program (PDMP). By building a more comprehensive set of data from the health information exchange (HIE), this dashboard provides participating clinicians with the list of opioids/controlled substances prescribed or administered to a clinician’s patients even before a prescription is filled at the pharmacy.

The Polychronic dashboard identifies patients with multiple chronic disease conditions putting them most at risk and in need of intensely focused care coordination. Organizations with a data analytics strategy built upon participation in a successful HIE will be well positioned to better manage care coordination, while lowering costs and readmission rates.

Dashboard Available Include:

- Quality Metrics
- High Risk Patients
- Readmissions
- Disease Registries
- Utilization
- Behavioral Health
- Controlled Substances
- Polychronic Patients



Controlled Substances

Controlled Substances dashboard presents patient activity where at least one prescription in the controlled substances category is prescribed and dispensed, as well as those that received an overlapping opioid prescription. Chart overviews include breakouts by facility and date range of prescription, overlapping prescriptions over 12 months, and top five opioid medications prescribed.



Polychronic Patients

Polychronic patients dashboard displays patients with three or more chronic clinical conditions with visits within the past 12 months. Patients may be more likely to consume health resources and may benefit from care coordination and periodic contact.

To learn more about this and other SacValley MedShare dashboards
schedule a dashboard demonstration by emailing: info@sacvalleymys.org

530-487-4997 info@sacvalleymys.org www.sacvalleymys.org

2485 Notre Dame Blvd. Suite 370-20 Chico, CA 95928