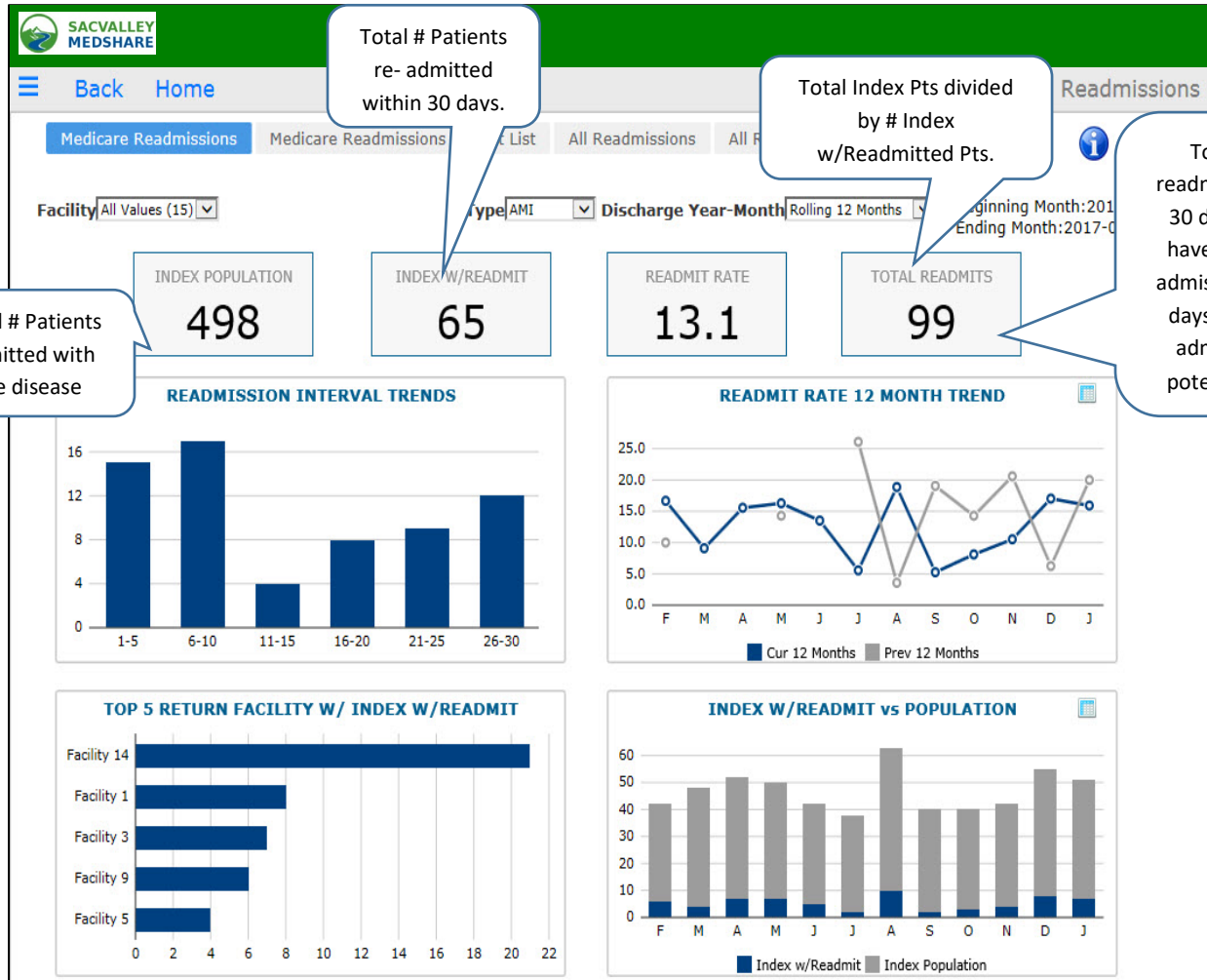




## Dashboard User: Readmissions Tile

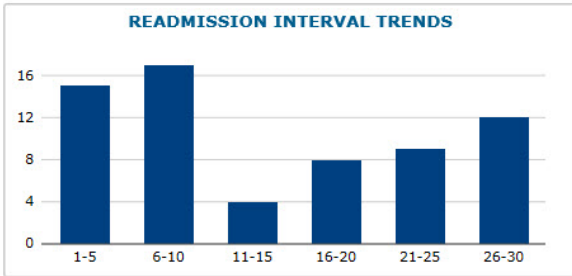


Total # Patients re-admitted within 30 days.

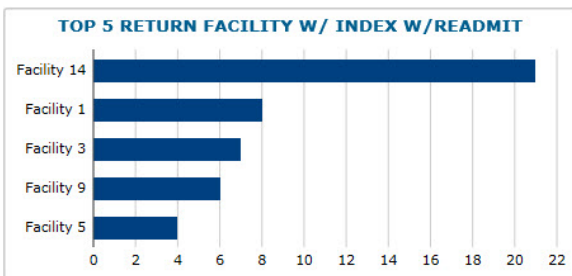
Total Index Pts divided by # Index w/Readmitted Pts.

Total # of Pt. readmissions within 30 days. Pts may have more than 1 admission within 30 days. Only 1st re-admit counts as potential penalty.

Total # Patients admitted with the disease



Displays the **Readmit trends by date ranges**. Most frequent in this example occur within 0-5 days. This is useful tool for analyzing reasons for re-admit and designing interventions to prevent. The need for follow up clinic appointments within 0-5 days or phone contact to check patient condition and answer questions, ensure medication compliance. Trend can vary by disease condition and facility. Drill down on bar chart opens patient specific list.



Displays the **FACILITIES** where patients returned for readmission. Organizations may know when patient readmitted to their facility, but not when they readmit elsewhere. Useful to identify trends in patient utilization, and targeted patient education and coordination between facilities. **Only admissions to another qualified Acute care facility IPPS count**. Transfers between hospitals, admits to Critical Access, Long term care, psychiatric or rehabilitation hospitals and other specialty facilities do not count.



Drill down from the bar on chart opens patient list Filtered by Return Facility.

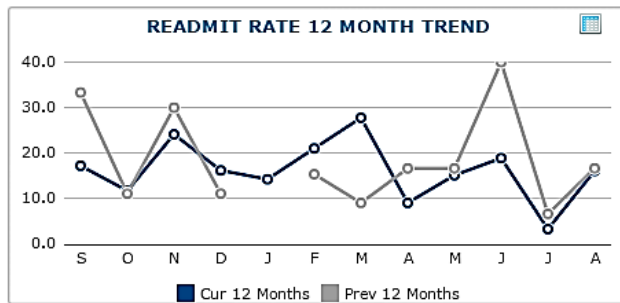
Back Home Readmissions

Medicare Readmissions Medicare Readmissions Patient List

Facility: All Values (15) Type: AMI, COPD, HF, HIP-KNEE, PNI, STROKE Discharge Year-Month: Rolling 12 Months Beginning Month: 2016-02 Ending Month: 2017-01

Return Facility: Facility 14 No. Days: All Values (6)

#	Patient Name	DOB	Sex	Admit Date	Discharge Date	Provider	Condition	Facility	Primary Diagnosis
17	Index First Return	403614, PATIE	1951/02/20	M	2016-04-25	2016-04-26	PHYSICIAN93951, 93951 (TRRRQ@KQ)	STROKE	Facility 9 161.8 -- Other nontraumatic intracer
18	Index First Return	1973943, PATIE	1936/07/20	M	2016-04-26	2016-05-06	PHYSICIAN93860, 93860 (TRRRRWST)	STROKE	Facility 3 163.9 -- Cerebral infarction, unspec
19	Index First Return	243944, PATIE	1929/12/02	F	2016-02-07	2016-02-14	PHYSICIAN94155, 94155 (TRRRRST%R)	STROKE	Facility 9 160.8 -- Other nontraumatic subarac
20	Index First Return	656962, PATIE	1932/12/15	F	2016-02-02	2016-02-05	PHYSICIAN93467, 93467 (^RQ@RR)	STROKE	Facility 9 163.5 -- Cerebral infarction due to ur
21	Index First Return	2056166, PATIE	1946/08/08	F	2016-04-13	2016-04-15	PHYSICIAN91820, 91820 (%W%SCK)	STROKE	Facility 9 G45.9 -- Transient cerebral ischemic
22	Index First Return	144569, PATIE	1950/07/14	F	2016-04-13	2016-04-24	PHYSICIAN93860, 93860 (TRRRRWST)	STROKE	Facility 9 163.441 -- Cerebral infarction due to
23	Index First Return	917095, PATIE	1943/06/14	M	2016-04-10	2016-04-13	PHYSICIAN91849, 91849 (R^R%SW)	STROKE	Facility 9 163.9 -- Cerebral infarction, unspec



READMIT RATE 12 month Trend: Displays a monthly trend of readmissions for selected condition and facility. Also provides a comparison with previous 12 month period. (Data dependent). Clicking on the spreadsheet icon upper right opens a pop-up

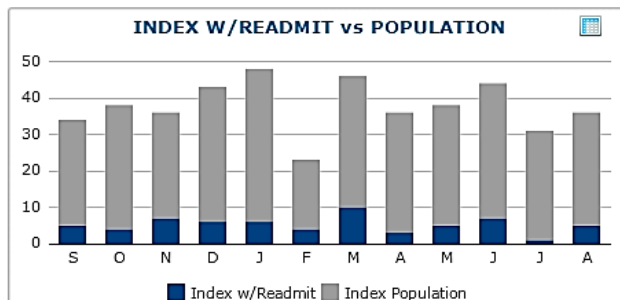
Readmit Rate 12 Month Trend Table

Month	Cur 12 Months	Prev 12 Months
September	17.2	33.3
October	11.8	11.1
November	24.1	30.0
December	16.2	11.1
January	14.3	
February	21.1	15.4
March	27.8	9.1
April	9.1	16.7
May	15.2	16.7
June	18.9	40.0
July	3.3	6.7
August	16.1	16.7

PDF Excel

Table exports to PDF and Excel

display with actual values.



Drill down from the bar on chart opens patient list Filtered by Return Facility.

### INDEX W/Readmit vs POPULATION

Comparison of readmits to the total admissions for condition by month. May see seasonal variations especially for conditions of Pneumonia and COPD.

Selecting changes chart display to actual values. No patient drill down in this view. Re-selecting icon changes display back to bar chart.

Discharge Year-Month	Index w/Readmit	Index Populatio
2015-09	5	2
2015-10	4	3
2015-11	7	2
2015-12	6	3
2016-01	6	4
2016-02	4	1





Back Home Readmissions

Medicare Readmissions **Medicare Readmissions Patient List** All Readmissions All Readmissions Patient List

Selecting patient list from the main Readmissions Dashboard is a quick way to go directly to the patient specific details for readmissions for each condition. Filters available include Facility (initial admitting) , Return Facility, Disease Type, # days, and Discharge Year-Month.

Back Home Readmissions

Medicare Readmissions **Medicare Readmissions Patient List** All Readmissions All Readmissions Patient List

Facility: All Values (15) Type: COPD Discharge Year-Month: YTD Complete Beginning Month: 2017-01 Ending Month: 2017-01

Return Facility: All Values (15) No. Days: 1-5

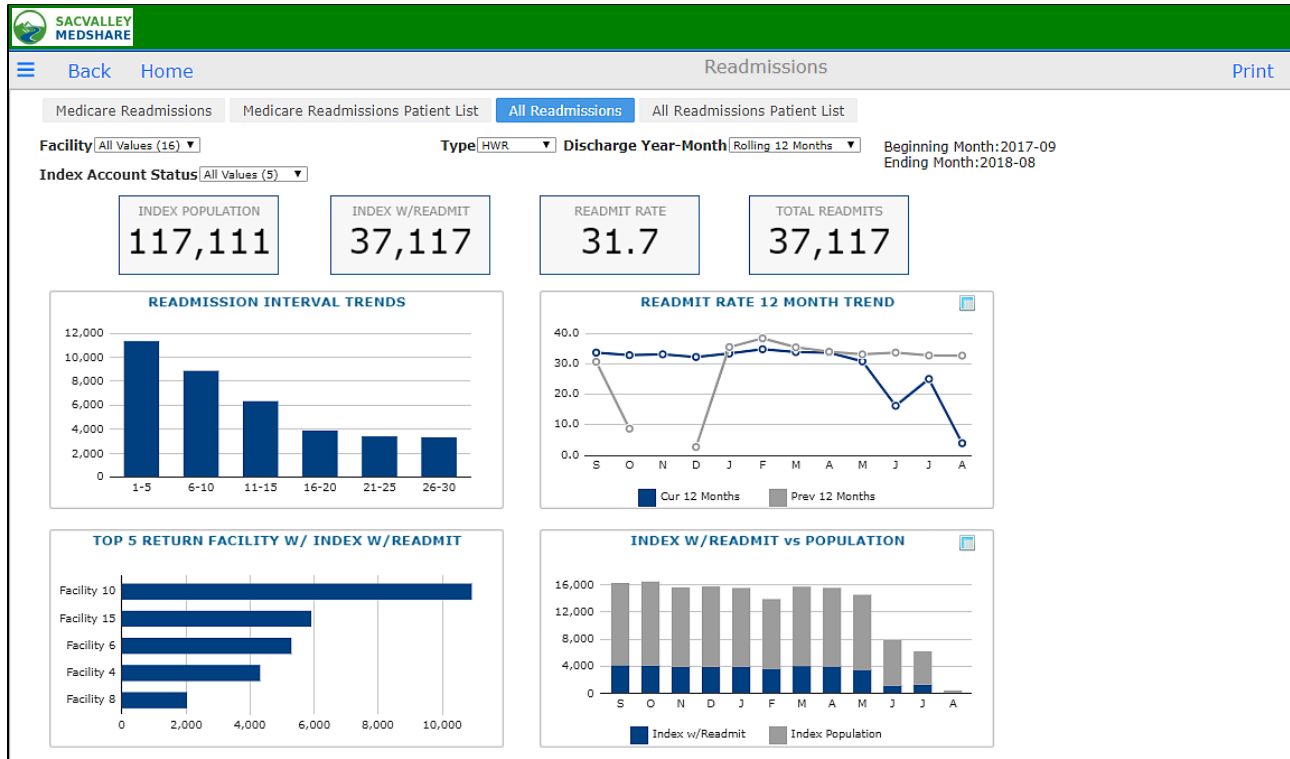
#	Patient Name	DOB	Sex	Admit Date	Discharge Date	Provider	Condition	Facility	Primary Diagnosis
4									
1	<b>Index</b> 1655343, PATIEI	1947/10/27	M	2017-01-10	2017-01-13	PHYSICIAN19122, 19122 (RANST)	COPD	Facility 2	J44. -- CHRONIC OBSTRUCTIVE PUL
	<b>First Return</b>			2017-01-14	2017-02-02	PHYSICIAN20754, 20754		Facility 2	J44. -- CHRONIC OBSTRUCTIVE PUL
2	<b>Index</b> 603115, PATIEN	1950/06/26	F	2017-01-22	2017-01-24	PHYSICIAN96800, 96800 (JOUDFAN)	COPD	Facility 8	J44.9 -- CHRONIC OBSTRUCTIVE PU
	<b>First Return</b>			2017-01-29	2017-01-30	PHYSICIAN96462, 96462		Facility 6	J44.9 -- CHRONIC OBSTRUCTIVE PU
3	<b>Index</b> 948566, PATIEN	1951/12/30	M	2017-01-10	2017-01-15	PHYSICIAN96796, 96796 (CLAWAAC)	COPD	Facility 9	J44.9 -- CHRONIC OBSTRUCTIVE PU
	<b>First Return</b>			2017-01-19	2017-01-22	PHYSICIAN126258, 126258		Facility 14	--
4	<b>Index</b> 1372926, PATIEI	1944/08/20	F	2017-01-22	2017-01-23	PHYSICIAN38691, 38691 (HUGT)	COPD	Facility 8	J44.9 -- CHRONIC OBSTRUCTIVE PU
	<b>First Return</b>			2017-01-24	2017-01-30	PHYSICIAN38708, 38708		Facility 13	J44.9 -- CHRONIC OBSTRUCTIVE PU

**Facility:** The first facility where patient is admitted with one of the qualifying index conditions. In many cases, this will be restricted to the client's eligible hospital, unless the client has multiple eligible facilities. **The hospital where the patient is first admitted** is the one that is assigned the potential penalty if the patient readmits at the same or any other eligible facility (**RETURN Facility**) within 30 days for any reason.

Specific **exclusion criteria for readmission** conditions included scheduled procedures, treatment for cancer and other diseases. KAMMCO structures data rules to comply with specific criteria to the extent possible based on available data. Lack of access to billing and claims and non-KHIN participant's data limits ability to completely replicate or comply with CMS or other payer algorithms. The intent of Readmissions is to provide early identification of potential risks.



## All Readmissions



All readmissions includes the 7 Medicare conditions plus readmits for any conditions (HWR) to the list of clinical conditions. Readmissions in this section are not restricted to Medicare beneficiaries and includes all patients 18 years and older.

Eligible hospitals include Critical Access Hospitals in addition to Acute IPPS facilities.