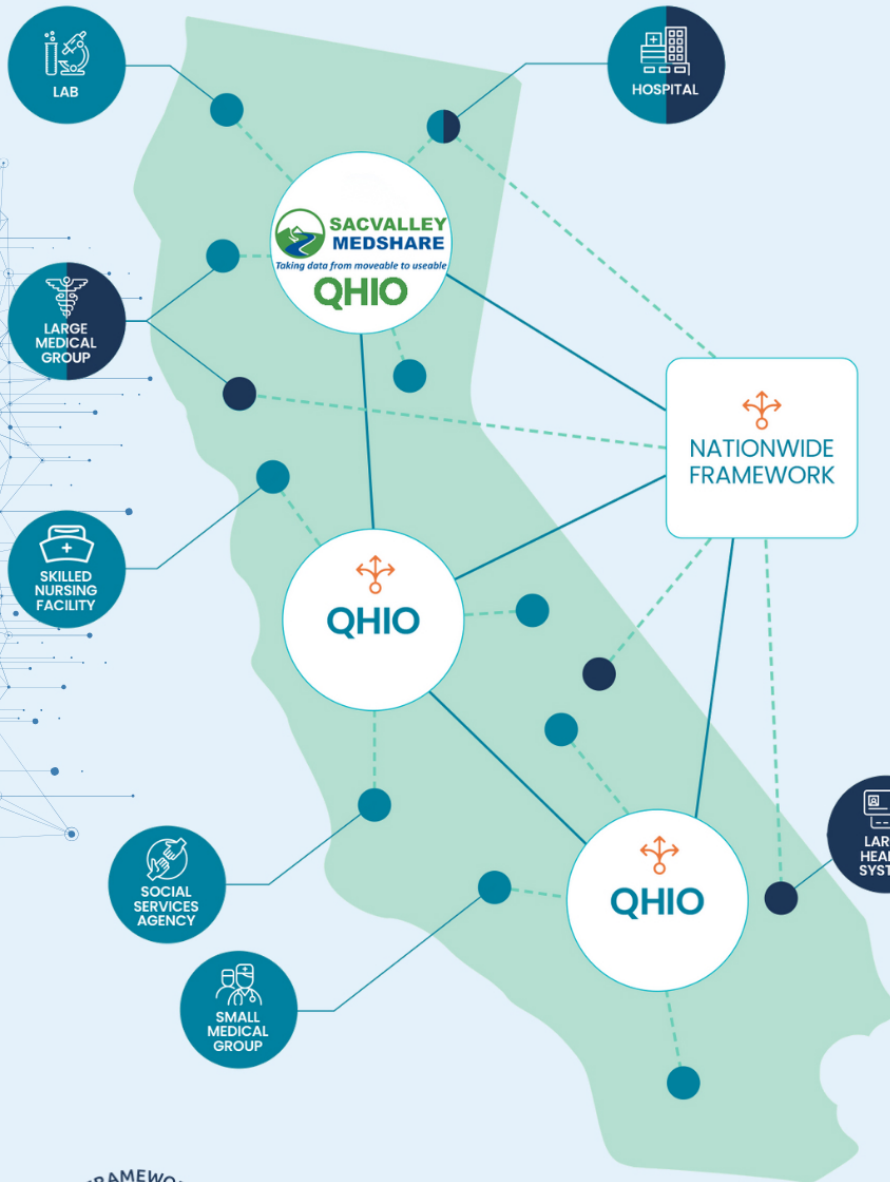




The California Data Exchange Framework (DxF) is designed to standardize and enhance the exchange of health information across the state's healthcare landscape. SacValley MedShare is a Qualified Health Information Organization (QHIO) designated by the state to exchange health data securely across California.

What regions of California does SacValley MedShare serve?

We believe the North State includes all communities that receive and provide patient care from Fresno in the south to Oregon in the north and from our coastline to Nevada.



What types and size of organizations do you serve?

We serve all provider organizations mandated in the California Health and Human Services (CalHHS)

Data Exchange Framework (DxF).

By January 31, 2024, the following provider organizations are required to sign the DSA and comply with its directive to either join a QHIO or build their own connections to the DxF:

- General acute care hospitals
- Physician organizations and medical groups
- Skilled nursing facilities
- Health care service plans and disability insurers that provide hospital, medical or surgical coverage
- Clinical laboratories
- Acute psychiatric hospitals

The following provider organizations have until January 31, 2026:

- Physician practices with less than 25 physicians
- Rehabilitation hospitals
- Long-term acute care hospitals
- Acute psychiatric hospitals
- Critical access hospitals
- Rural general acute care hospitals with less than 100 acute care beds
- Nonprofit clinics with less than 10 providers
- State run psychiatric hospitals

Contact us today to learn how to join SVMS QHIO to comply with the CALHHS DxF 2024 + 2026 deadlines.

info@sacvalleyms.org or visit www.sacvalleyms.org

